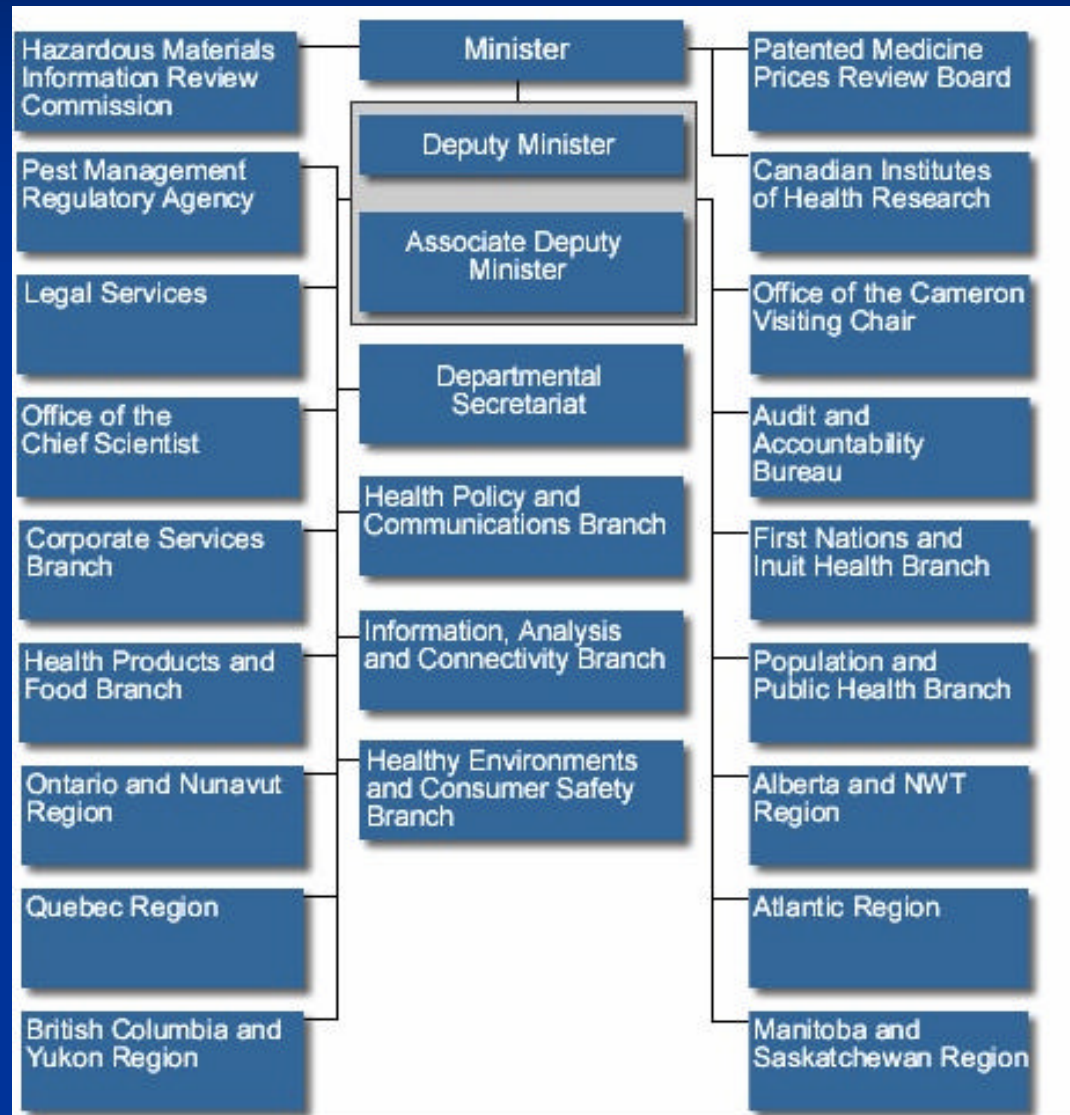


Research career in the public service: linking policy and research

Dr Sylvie Stachenko
Centre for Chronic Disease Prevention
and Control, Health Canada

Health Canada – a Science-Oriented Department



Strengthening Health Canada's Scientific Orientation – a Renewed Commitment

- Renewed commitment towards science and evidence-based decision-making
 - Framework for Science

Health Canada's Scientific Bodies

- Office of the Chief Scientist
- Science Advisory Board
- Health Canada Scientific Branches
 - Health Products and Food Branch
 - Information, Analysis and Connectivity Branch
 - Healthy Environments and Consumer Safety Branch
 - Population and Public Health Branch

Centre for Chronic Disease Prevention and Control

Programs focus on:

- Knowledge Development and Dissemination
- Policy and Program Development
- Surveillance

International Activities:

- WHO Collaborating Centre on Surveillance of Cardiovascular Diseases
- WHO Collaborating Centre on NCD Policy

CCDPC - Knowledge Development and Dissemination

- Reviewing and disseminating evidence on best practices
- Promotion of more effective use of knowledge
- ...
- National Best Practice Consortium

CCDPC – Policy and Program Development

- Development of strategies for the management and control of chronic disease priorities
 - Canadian Heart Health Initiative
 - Cancer Breast Cancer Initiative
 - Canadian Diabetes Strategy

...

CCDPC - Surveillance

- Surveillance is a key activity

Types of activities:

- Surveillance on risk factors/diseases
 - National Diabetes Surveillance System
 - Cancer Surveillance
- Monitoring of interventions
 - National Breast Screening Surveillance System
 - Childhood Cancer Treatment

Types of Research at Health Canada

- Biomedical
- Epidemiological Research
- Evaluation research
- Policy Research
- Research synthesis

Biomedical Research

- National Microbiology Laboratories –
Winnipeg
 - Biosafety Level 4 Lab for Human and animal pathogens and diseases
- Environmental Health
- Laboratory for food borne zoonoses -
Guelph
- Toxicology
- ...

Epidemiological Research

Published reports

- Diabetes in Canada
- Burden of Chronic Diseases
- Report on Mental Illnesses in Canada
- Canadian Cancer Incidence Atlas

...

Evaluation Research

- Canadian Heart Health Initiative
 - Demonstration sites across Canada
 - Common process evaluation protocols
 - Dissemination Research

Policy Research

- International comparative studies on policy for NCD
- Health Policy Research Program (IACB)
 - \$2.3M / year
 - Policy Oriented Research
 - “Quality Workplaces for Health Professionals: Research on Knowledge Utilization”
 - “Governance Choices and Health Care Quality”
 - “Public Disclosure of Potential and Theoretical Health Risks”
 - “Health Impact of Economic Change”

...

Research Synthesis

- Managing information to make decisions
- Knowledge Translation
- Access to relevant and high-quality knowledge to effect fast, reliable and secure communication
 - Cardiovascular Infobase

HC Roles in Research

- Leveraging / pooling resources / co-funding
 - Canadian Breast Cancer Research Initiative (CBCRI)
- Identification of gaps and strategic research priorities
 - Cancer Control Strategy
- Funding
 - Health Policy Research Program
- Collaborative research activities across the spectrum of policy, epidemiological, and biomedical research
 - Aging cohort study

Research Training and Internship Opportunities

- Field Epidemiologist Training Program
- Health Canada Postdoctoral Fellowship Program
- International Health Youth Internship Program
- Canada's Skills and Learning Agenda
- Interchange Canada program

Conclusion

- Sound science
- Attract and retain reputable scientists
- Meet international standards
- Innovative approaches
- Ethical and appropriate use of resources